

Haskell Business Center

1420 Meador Ave. K-104

Bellingham, WA

\$0.82/SF + NNN

2,000 SF

Available November 2019

Ample

<1mile to I-5

5 minutes from downtown



Contact

Amia Froese, CCIM
360-676-4866
amia@saratogacom.com

1420 Meador Ave. K-104

PROPERTY FACT SHEET

Address: 1420 Meador Ave.
Bellingham, WA

Site: 2.0 acres

Zoning: Light Industrial

Building: Steel Building

Year Built: 2009

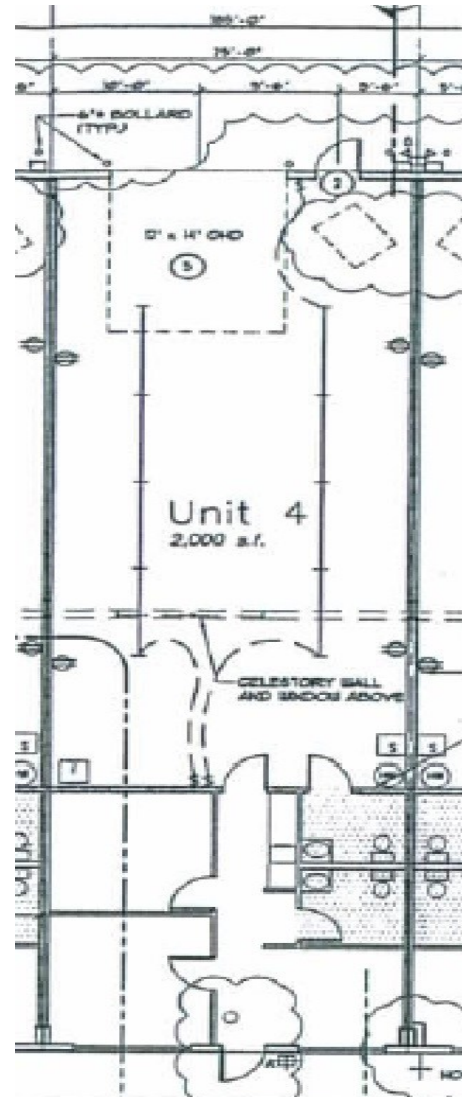
Building Size: 15,200 SF

Class: C

Parking: Ample

NNN: \$0.13

Sprinkler System: No



Contact

Amia Froese, CCIM
360-676-4866
amia@saratogacom.com