

**1126 -1130 N. Forest**

Bellingham, 98225

.....  
**\$15/SF/YR + NNN**  
.....

**From 1,661 SF to 4,449 SF**  
.....

**Available Now**  
.....

**13 On-site Parking Spaces**  
.....

**Central Downtown Location**  
.....



**Contact**

**Amia Froese**

**amia@saratogacom.com**

**360-676-4866**  
.....

**Carrie Hamilton**

**carrie@saratogacom.com**

**360-676-4866**

## 1126 -1130 N. Forest

### PROPERTY FACT SHEET

**Address:** 1126-1130 N. Forest St

**Site:** 13,750 SF

**Zoning:** Urban Village (Downtown)

**Building:** Concrete Block

**Year Built:** 1958

**Building Size:** 4,449 SF

**Class:** B

**Parking:** 13 Spaces Onsite

**NNN:** Estimated at \$4/SF/YR 2019

**Signage:** Monument

**Communications:** Cable

**Traffic Counts:** 9,100/day

**Sprinkler System:** No



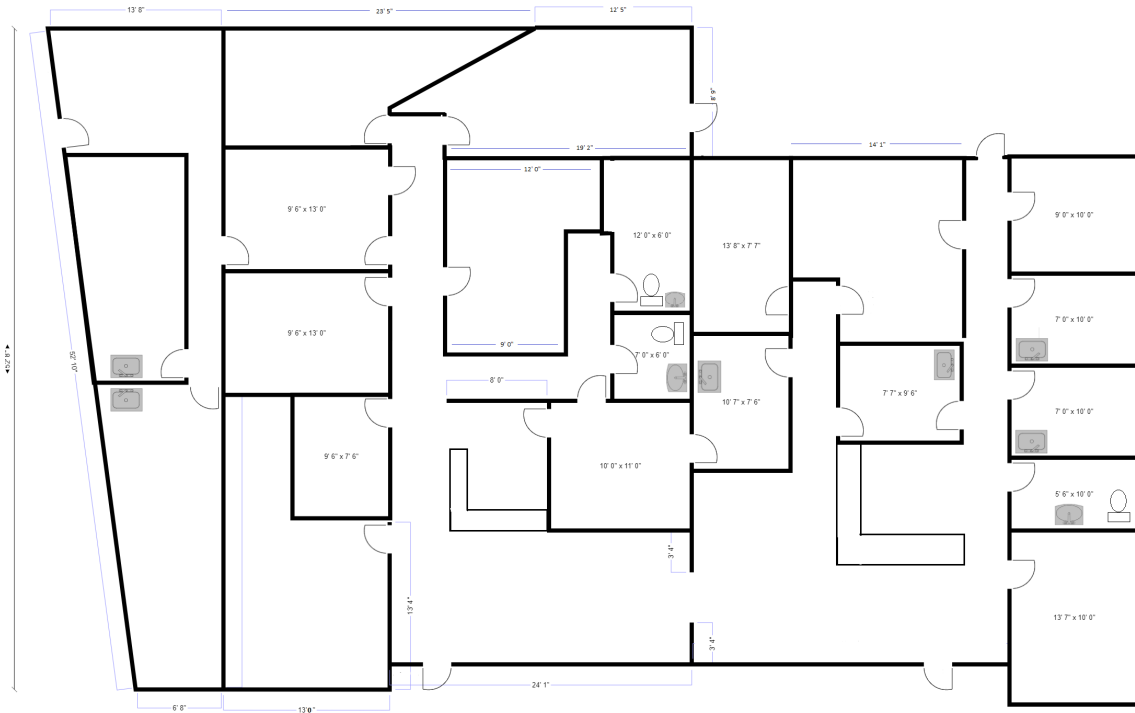
### Contact

**Amia Froese**  
360-676-4866  
amia@saratogacom.com

**Carrie Hamilton**  
360-676-4866  
carrie@saratogacom.com

## 1126 -1130 N Forest

### FLOOR PLAN



1126 - 1130 N. Forest St.

### Contact

**Amia Froese**  
360-676-4866  
amia@saratogacom.com

**Carrie Hamilton**  
360-676-4866  
carrie@saratogacom.com