

Puget Sound Energy Building

1327 N State Street,
Bellingham

\$18 - \$26/sf/yr

Modified Gross Lease

1,250 sf - 6,000 sf available

Parking Available

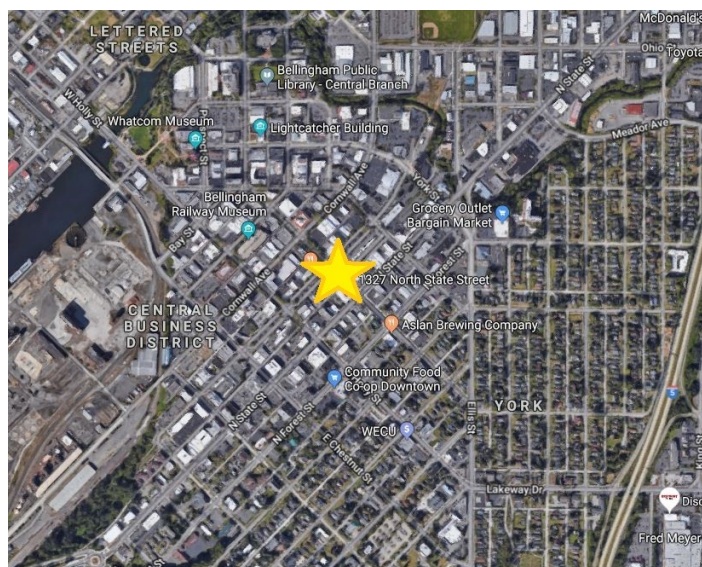
Bellingham Landmark Building

High Traffic Corner

Flexible Space Configurations



Location



Contact

Hannah Cano
360-676-4866
Hannah@saratogacom.com

Luke Reardon
360-676-4866
Luke@saratogacom.com

Puget Sound Energy

PROPERTY FACT SHEET

| | |
|------------------------|-----------------------------------|
| Address: | 1327 N State |
| Building Size | 30,000 SF |
| Zoning: | Commercial |
| Use: | Retail & Office |
| Sprinklers: | No |
| Elevator: | Yes |
| Parking: | Available onsite and adjacent lot |
| Lease Type: | Modified Gross |
| Signage: | Building Signage |
| Year Built: | 1920 |
| Traffic Counts: | 7,300 cars per day |

Contact

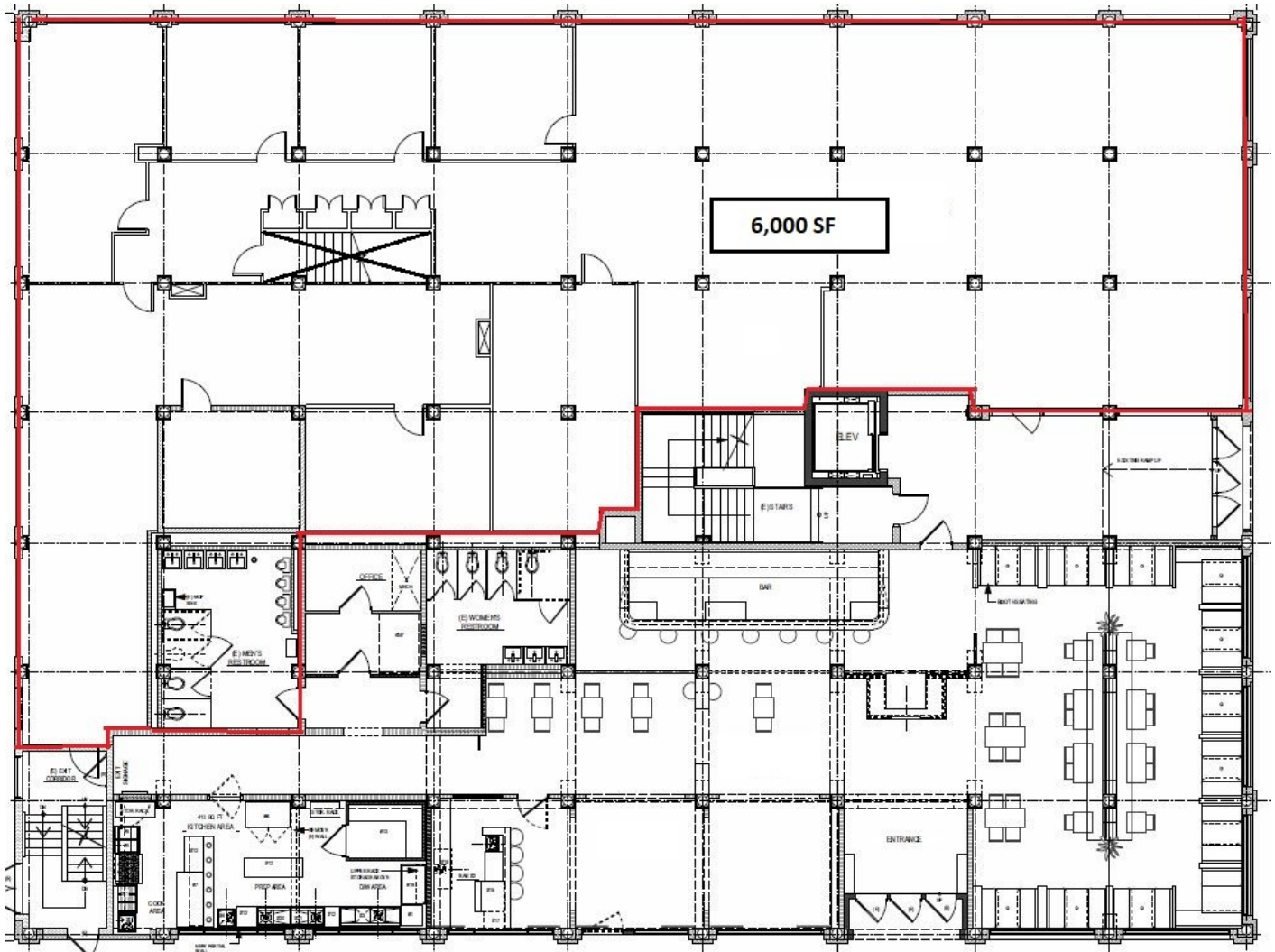
Hannah Cano
360-676-4866
Hannah@saratogacom.com

Luke Reardon
360-676-4866
Luke@saratogacom.com



Puget Sound Energy

First Floor: 2,300—6,000 SF



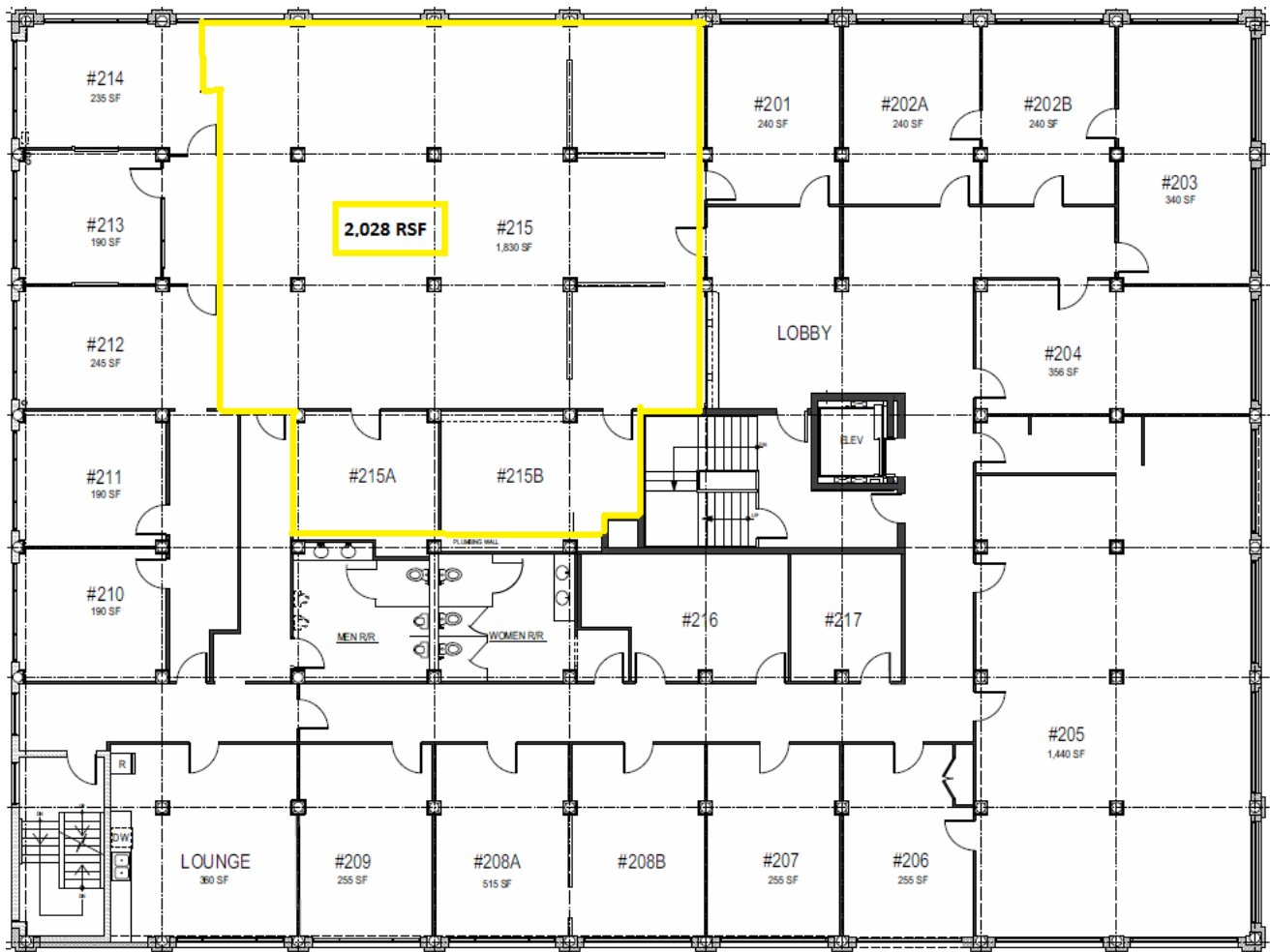
Contact

Hannah Cano
360-676-4866
Hannah@saratogacom.com

Luke Reardon
360-676-4866
Luke@saratogacom.com

Puget Sound Energy

Second Floor: 2,028 SF



Contact

Hannah Cano
360-676-4866
Hannah@saratogacom.com

Luke Reardon
360-676-4866
Luke@saratogacom.com