

## 4100 Marblemount Lane, Bellingham

### Features

- Flexible Configuration
- Retail/Office Space with warehouse area.
- 1 GL 14' Roll-up Door
- Main: 3070 Square SF
- Mezzanine: 1450 SF
- Year built: 2007
- Attractive Retail Entry
- Good visibility / corner location
- Landscaped gardens
- Ample Parking



### Location

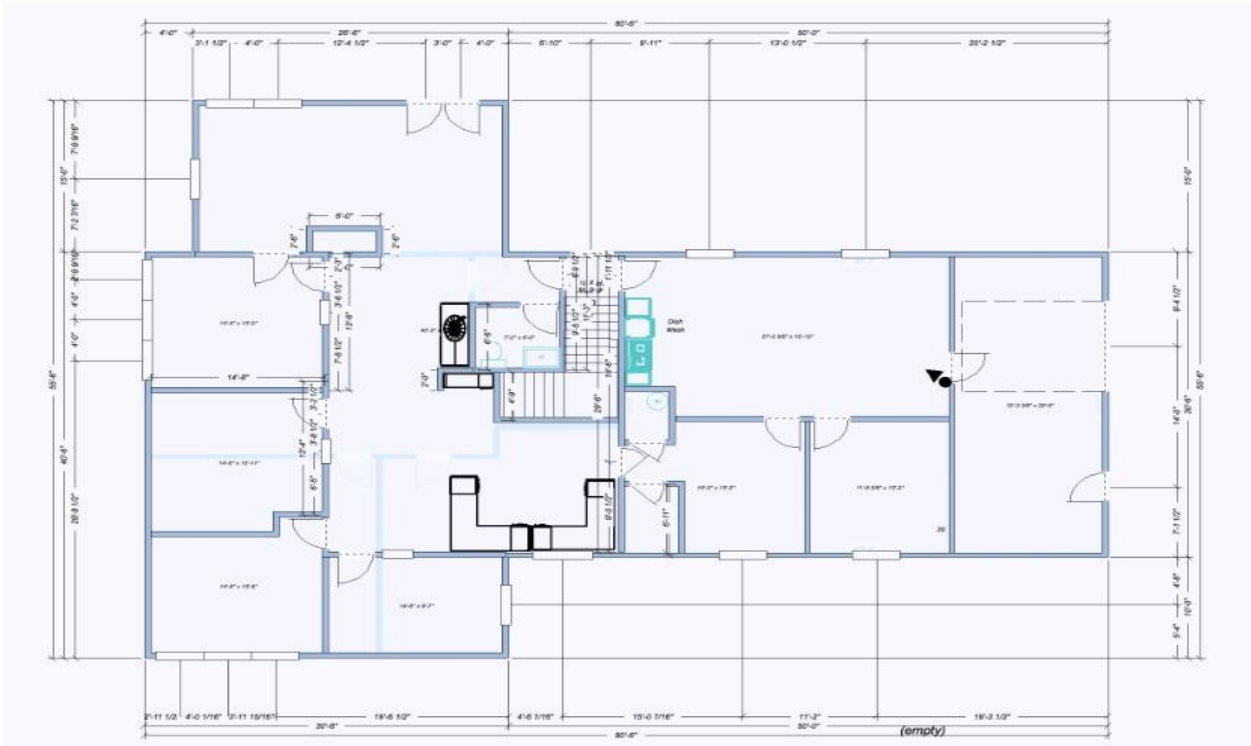


### Contact

**Hannah Cano**  
360-676-4866  
Hannah@saratogacom.com

**Eva Grace**  
360-676-4866  
Eva@saratogacom.com

4100 Marblemount Lane — Main level



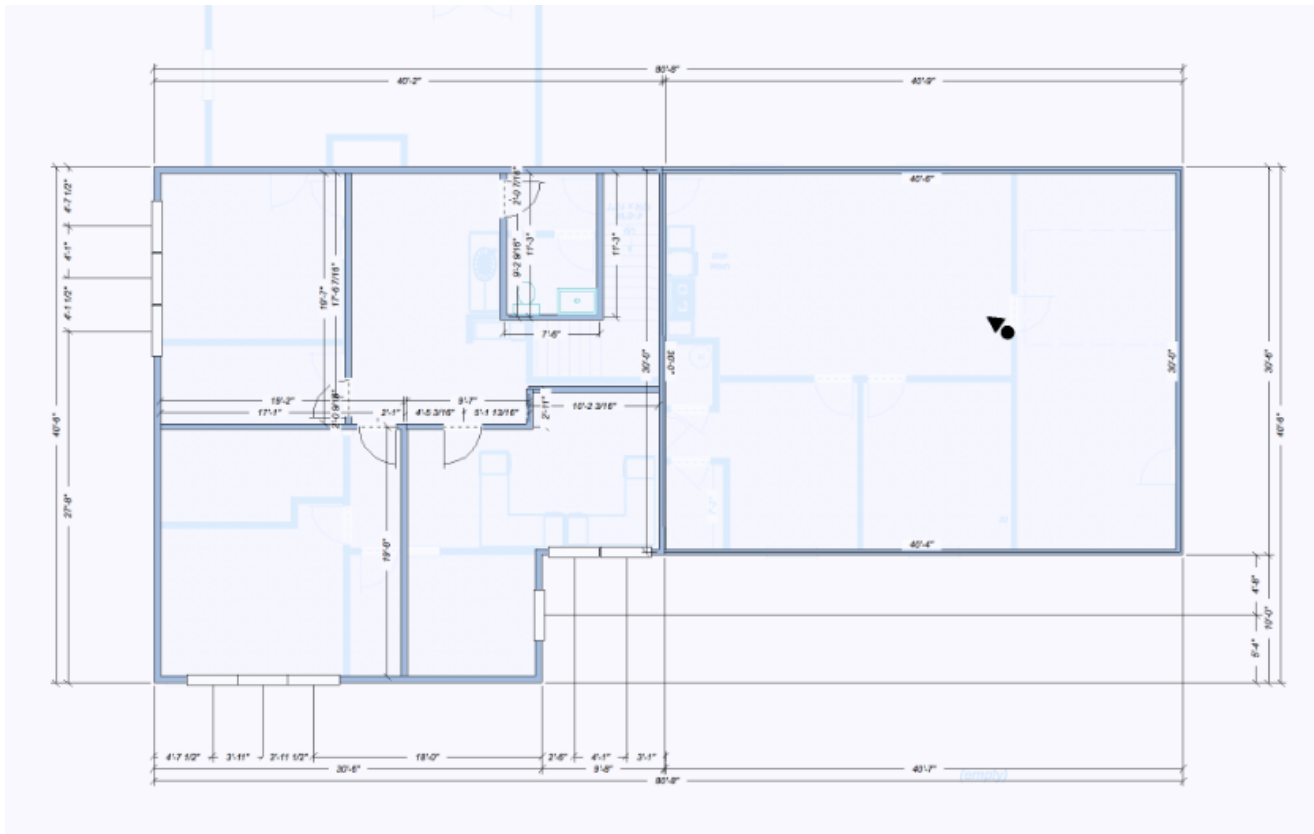
Main Floor - 3,070 square feet

Contact

**Hannah Cano**  
360-676-4866  
Hannah@saratogacom.com

**Eva Grace**  
360-676-4866  
Eva@saratogacom.com

## 4100 Marblemount Lane - Upper level



2nd Floor - 1,450 square feet

### Contact

**Hannah Cano**

360-676-4866

Hannah@saratogacom.com

**Eva Grace**

360-676-4866

Eva@saratogacom.com