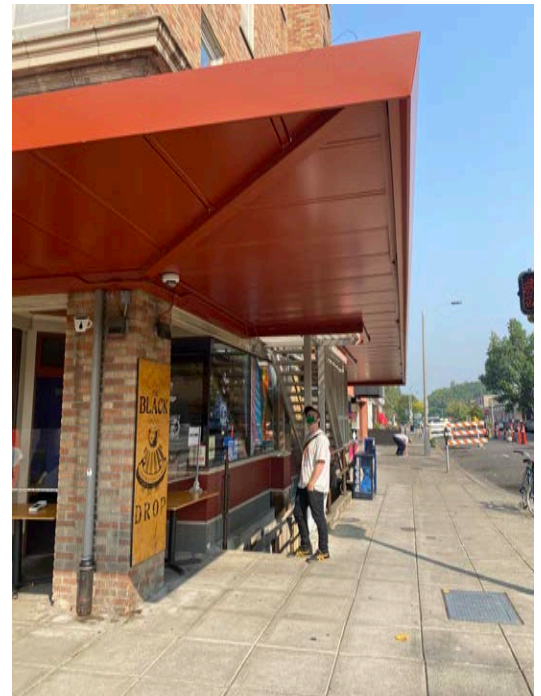
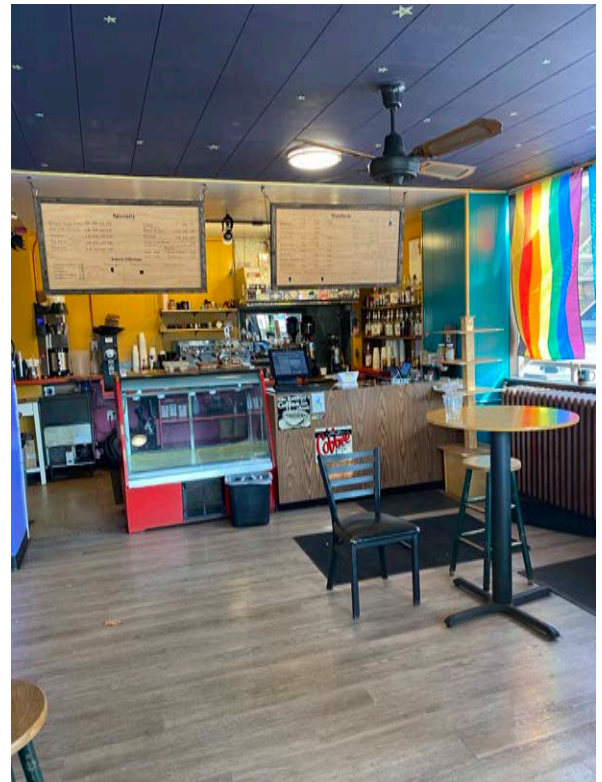


**308 W. Champion St.
Bellingham, WA**

- \$19.50 SF - Gross
- 1500 SF Maximum
- Divisible to 900sf and 600sf
- Located in Busy Downtown Commercial District
- Entertainment and Restaurant Hub
- Heavy Foot Traffic
- Close to Pickford Theater



308 W. Champion St., Bellingham, WA



End cap retail/restaurant space fantastically located in busy, popular area of downtown Bellingham, WA. Within the trendy entertainment and restaurant hub. Heavy foot traffic day and evening. Space was previously occupied by an iconic coffee shop with a strong following. The entire space is 1500 sf and is easily divisible into separate 900sf and 600sf spaces, entrances on Champion St. and Grand Ave. Landlord is willing help with TI. If you're looking to open a business in a colorful, vibrant, urban locale, this is your spot.

308 W. Champion St., Bellingham, WA

PROPERTY FACT SHEET

Address:	208 W. Champion St., Bellingham, WA
Unit:	1500 SF
Divisible	900 SF and 600 SF
Zoning:	Commercial
Year Built:	1929
Building Size:	6108 SF avg. per floor
Parking:	Street Parking
Signage:	Mounted

Contact



David Buckner
360-927-4992
David@SaratogaCom.com



Jeff Ayers
425-275-2406
Jeff@WestlakeAssociates.com



WESTLAKE
ASSOCIATES, INC.