

RETAIL/OFFICE SPACE
FOR LEASE

SARATOGA

RETAIL / OFFICE OPPORTUNITY IN HISTORIC FAIRHAVEN

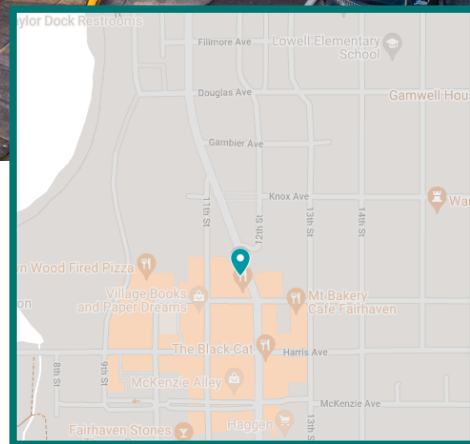
1132 FINNEGAN WAY, FAIRHAVEN



970 Square Foot Retail/Office Space

\$2,046 Per Month (inclusive of NNN/Condo Dues)

- Ground floor location.
- Prime location along the entrance to Fairhaven.
- Neighboring tenants include:
The Filling Station, Wisteria Tattoo, Estelle, Eleventh St Goods, & Avenue Bread
- Includes one secured parking space with surrounding street parking available.



Amia Froese, CCIM, CPM
amia@saratogaRE.com
360.610.4331

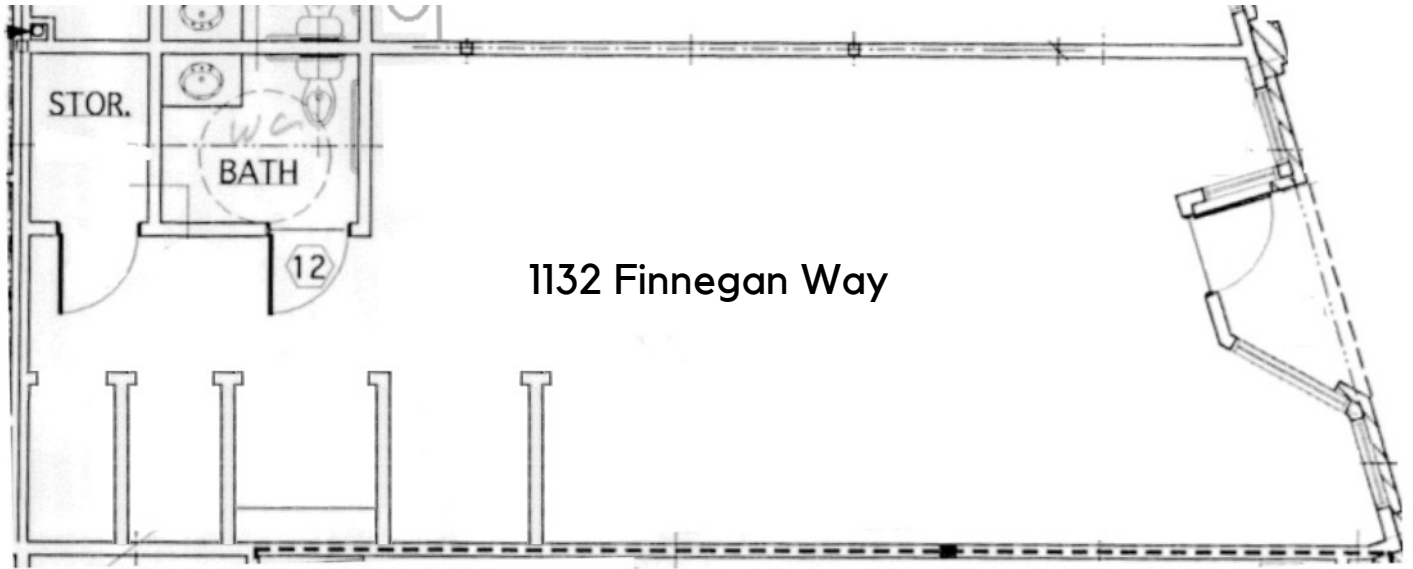
Hannah Cano
hannah@saratogaRE.com
360.610.4335

saratogaRE.com

228 E CHAMPION, STE 102, BELLINGHAM, WA 98225

INFORMATION CONTAINED HEREIN HAS BEEN OBTAINED FROM SOURCES DEEMED RELIABLE, BUT NOT GUARANTEED. LESSEE TO VERIFY.

Floor Plan



Property Location & Exterior



Interior Photos

