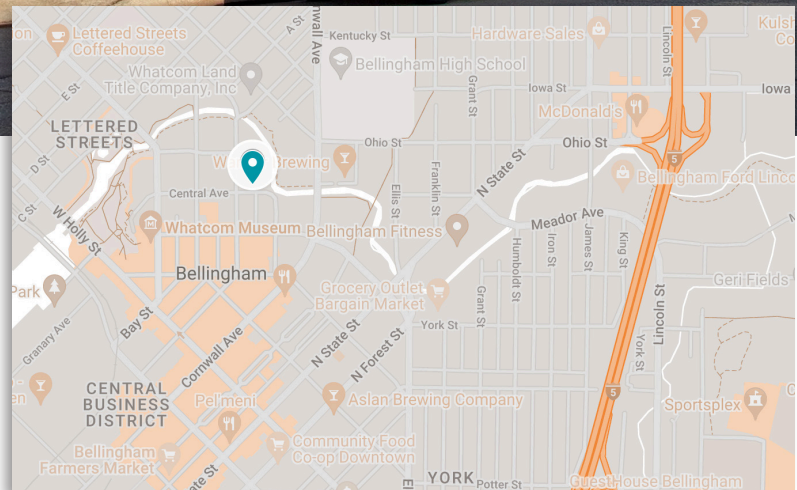


OFFICE
FOR LEASE

SARATOGA

DOWNTOWN OFFICE SPACE

300 N. COMMERCIAL ST., BELLINGHAM



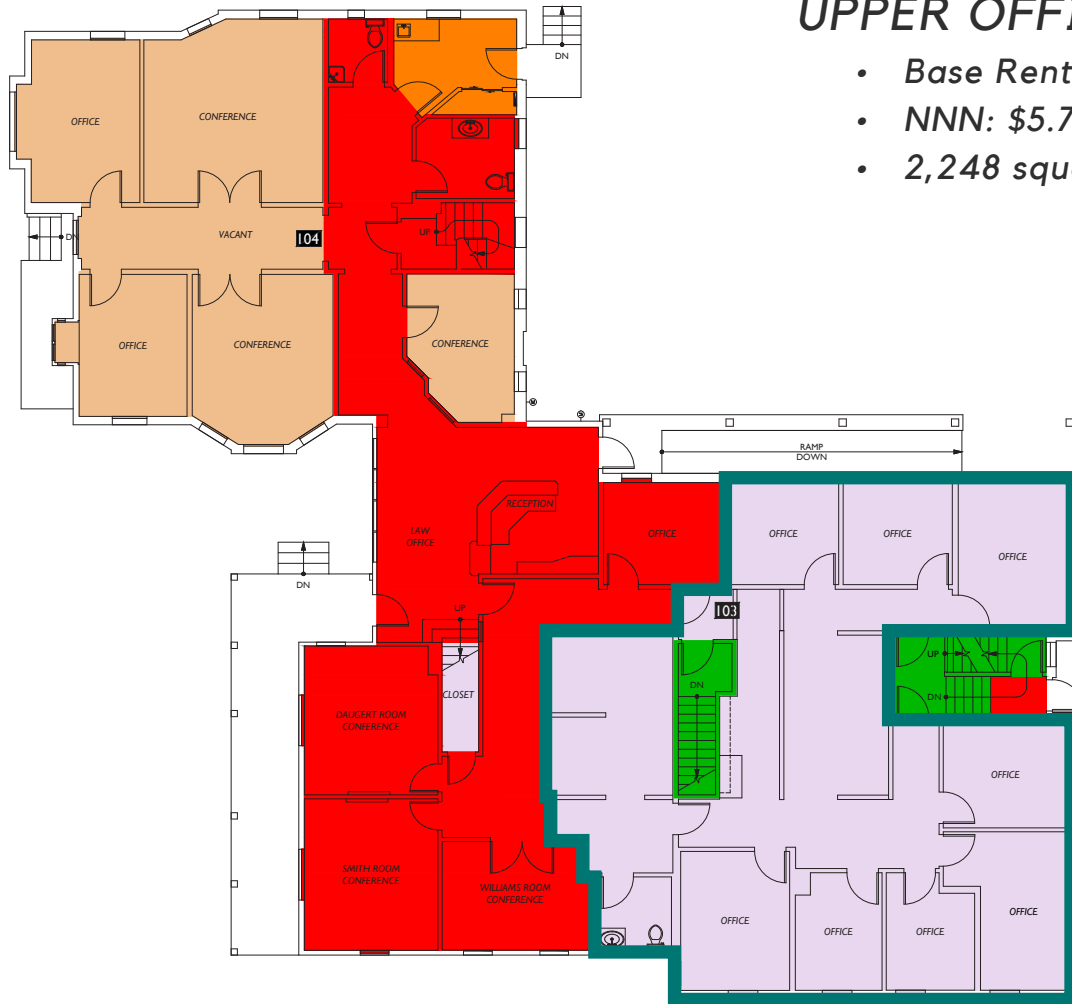
- Centrally located downtown offices
- Walk to City Hall, Courthouse and other amenities
- Attractive, charming offices with shared conference room and kitchenette

Hannah Cano
hannah@saratogacom.com
360.610.4335

www.saratogacom.com
228 E CHAMPION, STE 102, BELLINGHAM, WA 98225

INFORMATION CONTAINED HEREIN HAS BEEN OBTAINED FROM SOURCES DEEMED RELIABLE, BUT NOT GUARANTEED. LESSEE TO VERIFY.

SECOND FLOOR



UPPER OFFICES

- Base Rent: \$13/sf/yr
- NNN: \$5.75/sf/yr
- 2,248 square feet

